



## New Zealand Friendship Force Lakeside Gathering 26 - 29 August 2022

### INFORMATION SHEET

#### Venue

The venue for our 2022 Lakeside Gathering is MiCamp at Waitetoko, Lake Taupo. For information about the campsite go to <https://www.micamp.co.nz/lake-taupo.html>.

Most sessions and activities will be in the main auditorium, which is part of the accommodation complex. The Delegates meeting will be held in the Dining Hall.

#### Accommodation

All accommodation for the gathering has been arranged at MiCamp. We have reserved Lodges A-E, Units 1-5, and the self-contained flat (see attached map). All accommodation is twin bedrooms and shared bathrooms. Rooms will not be serviced. Each unit has a shared common space and a kitchenette with fridge and microwave.

The accommodation fee covers from Friday 2pm to Monday-10am. The charge of \$260 includes all meals and all linen including towels.

Powered caravan/campervan sites are also available and can be booked through the registration form. The charge of \$190 per person also includes all meals.

Day Registration is available at \$100 which covers lunches and dinners, but not accommodation or breakfasts. Single Day Registrations available on request.

#### Registration

The registration desk will be open in the Auditorium from 2.00pm on Friday 26<sup>th</sup>. Please go to the registration desk immediately on arrival to collect your programme and accommodation details.

Please note that lunch will **not** be provided on Friday, so bring your own or eat before you arrive.

#### Catering

The registration fee covers dinner on Friday, breakfast, lunch and dinner on Saturday, breakfast, lunch and dinner on Sunday, and breakfast on Monday.

All meals are served in the Dining Hall which is a short walk from the accommodation and auditorium areas.

We would like to provide morning tea for the business sessions and suppers for each evening. To do this we ask that if you can, **please bring a plate of finger food** to share during the three days – slices, biscuits etc. This will help to keep costs to a minimum for everyone.

#### Transport

##### Arrival by own vehicle:

Directions: Turn off SH1 at Waitetoko into Rawhira Road, and drive to the end of the road which is the MiCamp entrance.

## Transport from Taupo:

Taupo club members are happy to help ferry members from Taupo to MiCamp on the Friday and in reverse on Monday. If you require transport to and from the camp please indicate that on the registration form. If you don't have your pick-up details at this stage just put TBA in the relevant spaces. A small charge of \$10 pp to the driver will help defray petrol costs.

## Proposed Programme

A brief outline of the programme is attached to this information sheet. A detailed programme will be available as a separate document closer to the gathering.

## Sunday activities

At 2.00pm we will run the Bone Trophy competition, followed at 3.00pm by our *MiCamp Raceday Meeting* featuring different types of participant fun races (see programme attached). **Bring your best 'to the races' hat for the Fashion Stakes competition**, and a few \$2 coins to wager on your fancies.

## Musical Mayhem II

Our 2021 National Gathering finished with a bang, with our 'Musical Mayhem' evening featuring the Wellington Friendship Force band. We all loved it so much we have asked them to come back again to entertain us with another singalong and dance/rock 'n roll segment to get us up on our feet.



And again we invite members or clubs to put together an item or a party piece – you could play us a tune, sing us a song, perform a skit, read a poem, or anything else that you think will entertain us all! Purely optional, but we'd love you to contribute. Get those creative juices flowing and have some fun!

## Booking Conditions

Early Bird Registrations will go in the draw to win one of three \$50 vouchers. The closing date for early bird registrations is 30 June 2022. Registrations received after that date will only be accepted if space is available. No registrations will be accepted after 31 July 2022.

To be eligible for the Early Bird draw you need to include your FFI membership number on your registration form. If you don't already know your number, please contact your club President who will have it.

## Key Contacts

Organisers: Debbie Lattey, (Convenor) 04 293 3252, 021 689 348, [debbie@otaihanga.co.nz](mailto:debbie@otaihanga.co.nz)  
Colin Ridge, (Registrar) 07 378 5088, [colinjanet123@gmail.com](mailto:colinjanet123@gmail.com)  
Alan Milne, (Taupo President) 07 378 8088, [alanmilne40@gmail.com](mailto:alanmilne40@gmail.com)

Registration: Colin Ridge, 07 378 5088, [colinjanet123@gmail.com](mailto:colinjanet123@gmail.com)



friendship force  
NEW ZEALAND

# Race Day

## Sunday August 29th

at

# MiCamp Raceway

Waitetoko



3.00pm



## *Race Programme*

**Race One – MiCamp Welcome**

**Race Two – Covid Stayers Handicap**

**Slater Races – ‘Go the Slaters!’**

**Race Three – Friendship Stakes**

**Race Four – Field Reps Gold Cup**

***Winner Presentations***

***Fashion Stakes – Best***

***‘To the Races Hat’***

***(Special Guest Judges)***



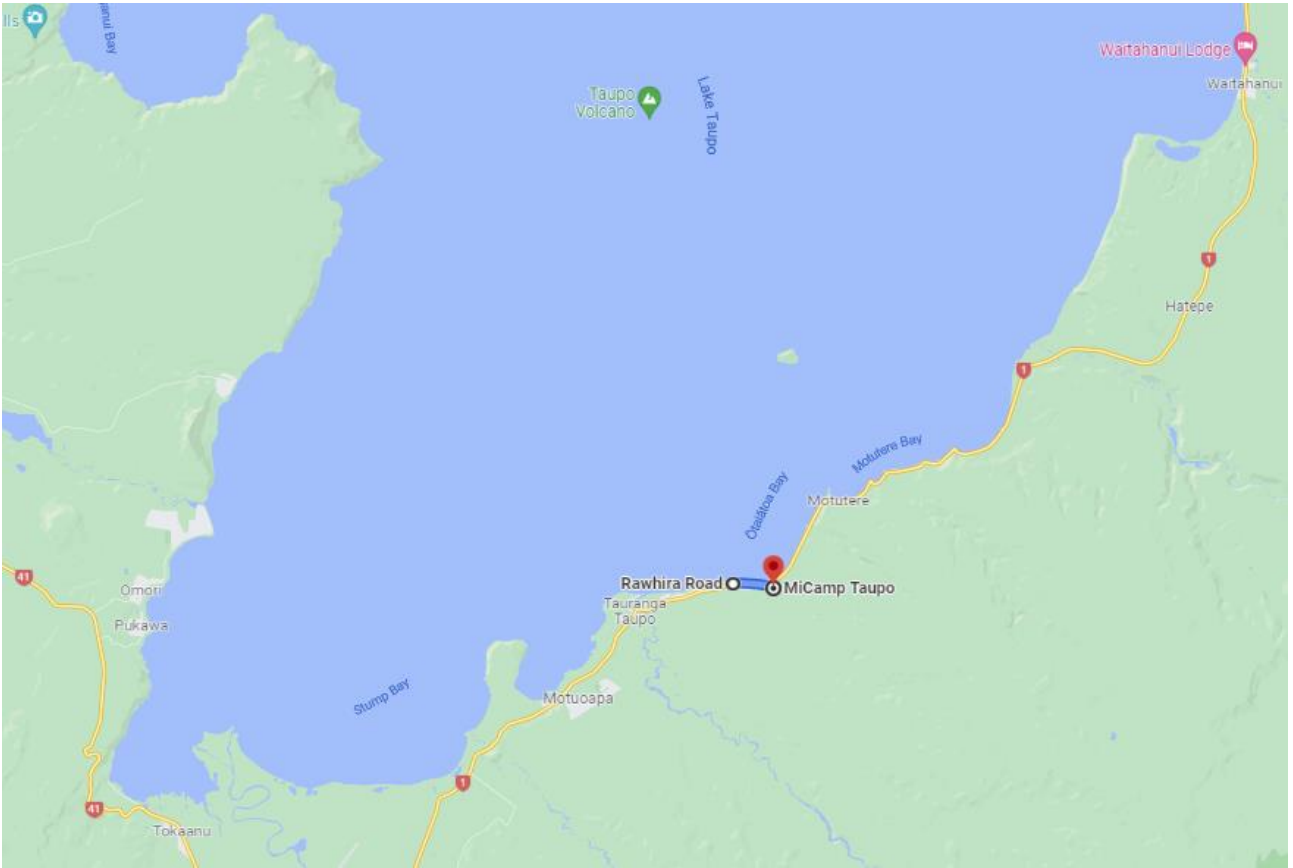
***Bring \$2 coins for betting***

# MiCamp at Waitetoko, Taupo – 26–29<sup>th</sup> August 2022

## Programme for Gathering

<b>Friday 26<sup>th</sup></b>	2.00pm	Registrations open in Auditorium
	12.00	Field Reps Meeting (venue to be arranged)
	3.00	Delegates Meeting in Dining Hall
	6.00	Dinner in Dining Hall
	7.00	Opening Session in Auditorium
<b>Saturday 27<sup>th</sup></b>	8.00am	Breakfast in Dining Hall
	9.00	Late Registrations in Auditorium
	9.30	Business session in Auditorium
	1.00pm	Lunch in Dining Hall
	2.00	Activities – outdoor
	6.00	Dinner in Dining Hall
	7.00	Activities in Auditorium
<b>Sunday 28<sup>th</sup></b>	8.00am	Breakfast in Dining Hall
	9.00	Business session in Auditorium
	1.00pm	Lunch in Dining Hall
	2.00	Bone Trophy
	3.00	Race Meeting at MiCamp
	5.00	Happy hour in Auditorium
	6.00	Dinner in Dining Hall
	7.00	Presentation of Awards
	7.15	Musical Mayhem II in Auditorium with the Wellington FF Band
<b>Monday 29<sup>st</sup></b>	8.00am	Breakfast in Dining Hall
	10.00	Checkout to be completed.

# MiCamp, 100 Rawhira Road, Waitetoko, Lake Taupo



## MiCamp Taupo Site Plan

